



INSTRUCTION BULLETIN

No. 340248
Machine: 6200
Published: 9-99/00
System: OPTIONS

NOTE: DO NOT DISCARD the Parts List from the Instruction Bulletin. Place the Parts List in the appropriate place in your machine manual for future reference. Retaining the Parts List will make it easier to reorder individual parts and will save you the cost of ordering an entire kit.

NOTE: Numbers in parenthesis () are reference numbers for parts listed in Bill of Materials.

Installation instructions for kit numbers 384123 and 384125.

SYNOPSIS / PROBLEM:

This kit contains the parts needed to install overhead guard light kits on the model 6200 sweeper.

Please follow step-by-step instructions.

SPECIAL TOOLS / CONSIDERATIONS: NONE

(Estimated time to complete: 1 hour)

PREPARATION:

(Refer to FIG. 1, 2 and 3)

FOR SAFETY: Before leaving or servicing machine, stop on level surface and set parking brake. Then turn off machine and remove key.

1. Disconnect battery cables from machine.
2. Locate the circuit breaker panel below the operator's controls in the front of the machine.



WARNING: Always disconnect battery cables from machine before working on electrical components.

INSTALLATION:

(Refer to FIG. 1, 2 and 3)

NOTE: If your machine is already equipped with the operating headlight / taillight package, procede to step number 5. Keep switch 360520 and circuit breaker 383722 as spare parts.

1. Open the circuit breaker panel.
2. Install the new circuit breaker (17) in the panel. Wire the circuit breaker (17) into the main harness. (Refer to FIG. 1, 2 and 3)
3. Remove the standard light switch in the control panel, and unplug it from the wiring harness. (Refer to FIG. 1, 2 and 3)
4. Plug the new switch (18) into the wiring harness, and snap it into place in the control panel. (Refer to FIG. 1, 2 and 3)
5. Remove the self adhesive backing strips from the vinyl duct work, and install the three pieces of vinyl duct work (13, 14 and 15) into the positions shown in figures 1 and 2. (Refer to FIG. 1 and 2)

6. Check that the grommet (10) is secured in the light mounting plate (5). (Refer to FIG. 1 and 2)
7. Run the light wiring connections through the grommet in the mounting plate, and connect the light to the light harness (11). Connect the light harness (11) to the main wiring harness. (Refer to FIG. 1 and 2)
8. Assemble the light (1) and mounting plate (5) to the overhead guard with the mounting channel (6), light mounting hardware (1), hex screw (7), washer (8), and hex nut (9). (Refer to FIG. 1 and 2)
9. Starting at the light, press the wiring harness into the vinyl duct work (13, 14 and 15), working down to the base of the overhead guard. (Refer to FIG. 1 and 2)
10. Bundle any excess harness (11) with the cable tie (12), and adhere to the machine with the cable tie mount (16). (Refer to FIG. 1 and 2)
11. Turn the machine power on, and check warning light (1) for proper operation.
12. Mount the lamp guard (2) to the mounting plate (5) with four hex screws (3) and washers(4). (Refer to FIG. 1 and 2)

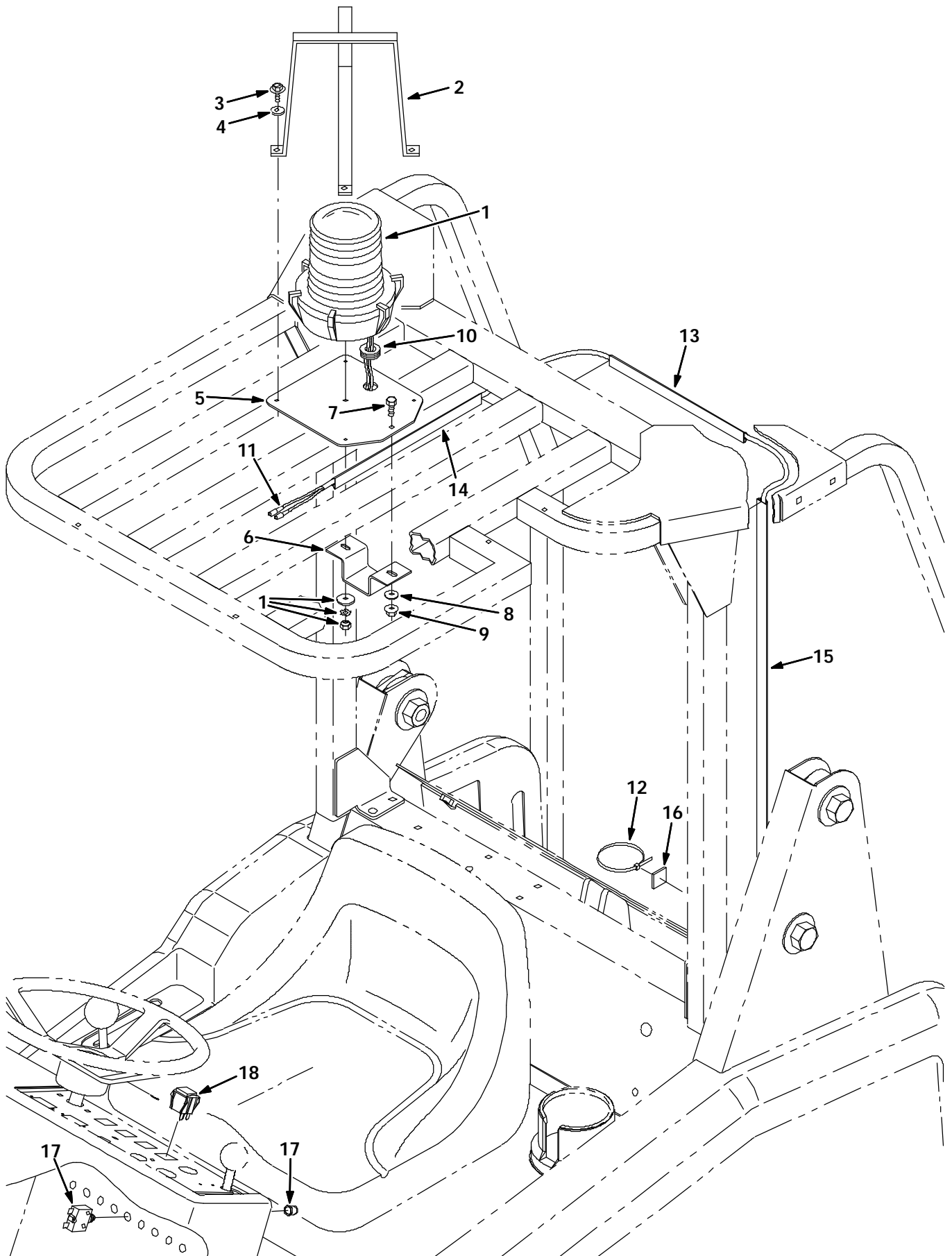


FIG. 1 - FLASHING LIGHT KIT 384123 INSTALLATION

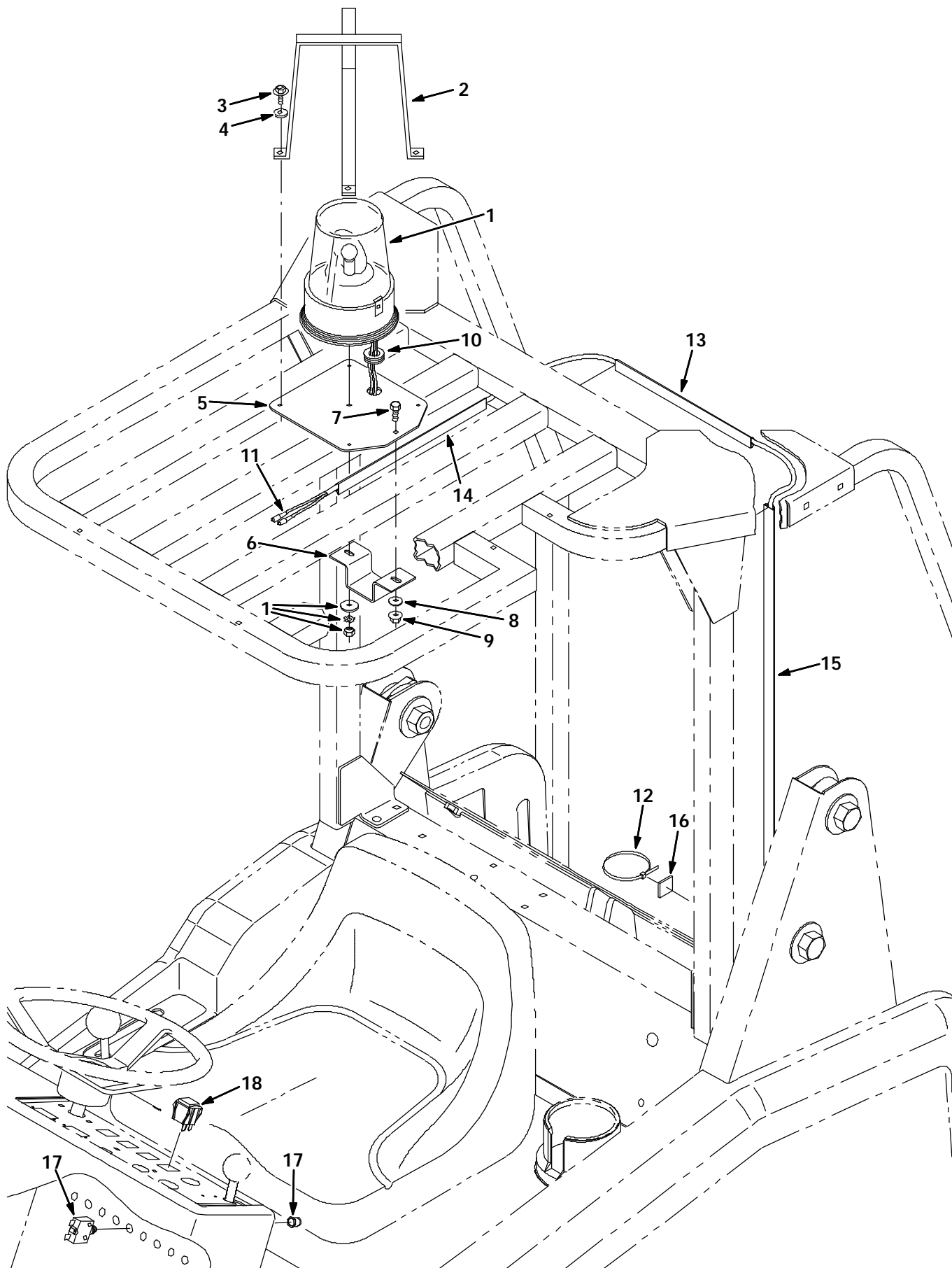


FIG. 2 - REVOLVING LIGHT KIT 384125 INSTALLATION

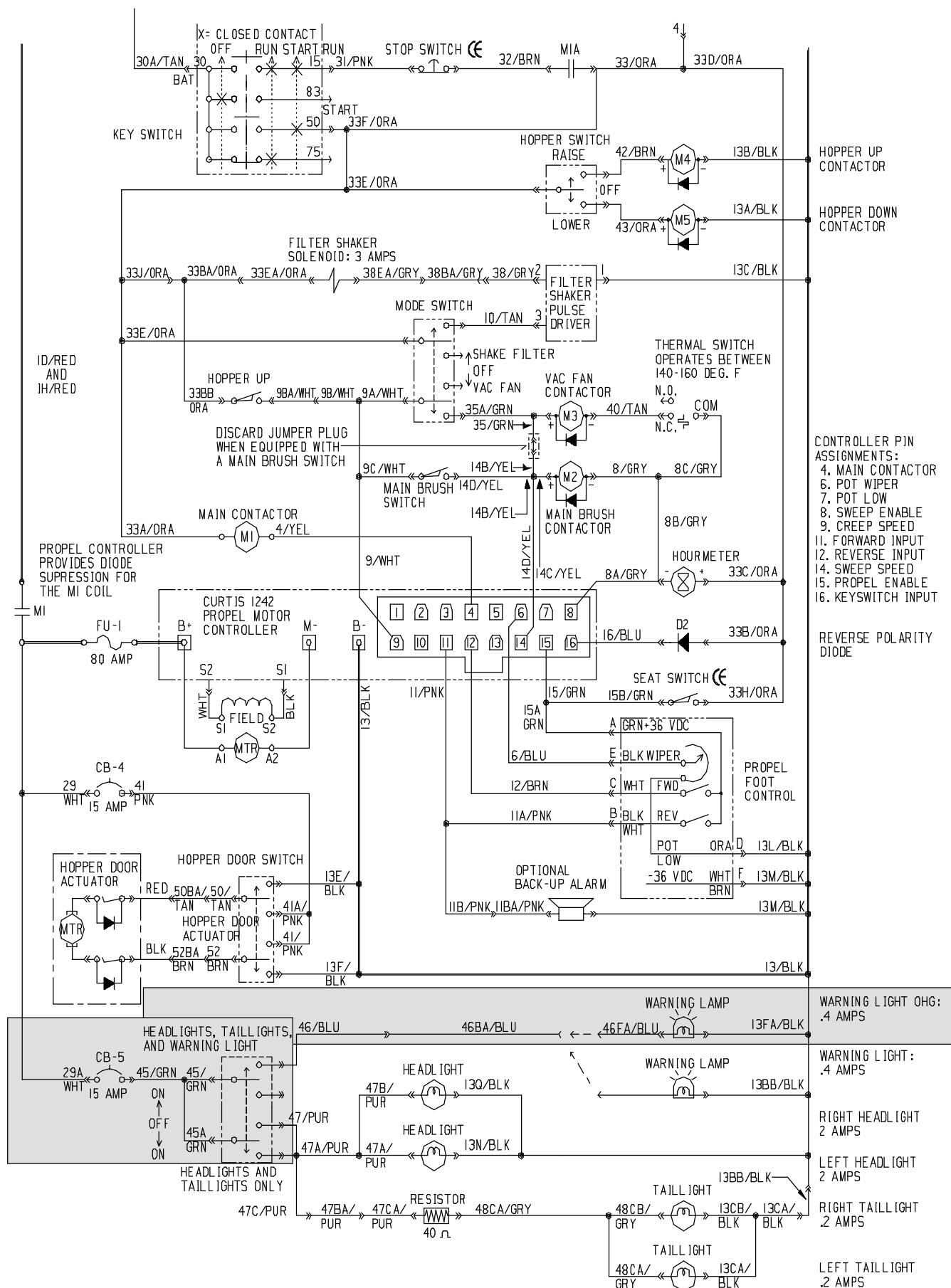


FIG. 3 - 6200 ELECTRICAL SCHEMATIC

BILL OF MATERIALS FOR OVERHEAD GUARD LIGHT KIT 384123

Ref.	TENNANT Part No.	Description	Qty.
1	383975	Lamp, Flsh, Amb, 36Vdc Rework	1
2	45272	Guard, Lamp	1
3	12459	Screw, Hex, Fmg, M06-1.0 X 20	4
4	32490	Washer, flat, .25 Hard	4
5	384145	Plate, Mtg, Light, Ohg	1
6	384146	Channel, Mtg, Light, Ohg	1
7	06942	Screw, Hex, M06-1.0 X 16, 8.8	1
8	32483	Washer, flat, .25 SAE	1
9	07790	Nut, Hex, Flange, M06-1.0	1
10	10632-2	Grommet, Rubber	1
11	383942	Harness, Light, Revl, Ohg, 6200	1
12	49266	Tie, cable 1.75D Max 7.50Lg	2
13	384021	Duct, Vinyl, 11.0L	1
14	384020	Duct, Vinyl, 12.0L	1
15	384019	Duct, Vinyl, 31.0L	1
16	55248	Mount, Cable Tie	2
17	383722	Circuitbreaker, 15Amp	1
18	360520	Switch, Rocker, Spdt, 3Pos	1

BILL OF MATERIALS FOR OVERHEAD GUARD LIGHT KIT 384125

Ref.	TENNANT Part No.	Description	Qty.
19	383976	Lamp, Flsh, Amb, 36Vdc Rework	1
20	45272	Guard, Lamp	1
21	12459	Screw, Hex, Fmg, M06-1.0 X 20	4
22	32490	Washer, flat, .25 Hard	4
23	384145	Plate, Mtg, Light, Ohg	1
24	384146	Channel, Mtg, Light, Ohg	1
25	06942	Screw, Hex, M06-1.0 X 16, 8.8	1
26	32483	Washer, flat, .25 SAE	1
27	07790	Nut, Hex, Flange, M06-1.0	1
28	10632-2	Grommet, Rubber	1
29	383942	Harness, Light, Revl, Ohg, 6200	1
30	49266	Tie, cable 1.75D Max 7.50Lg	2
31	384021	Duct, Vinyl, 11.0L	1
32	384020	Duct, Vinyl, 12.0L	1
33	384019	Duct, Vinyl, 31.0L	1
34	55248	Mount, Cable Tie	2
35	383722	Circuitbreaker, 15Amp	1
36	360520	Switch, Rocker, Spdt, 3Pos	1

TENNANT COMPANY
P. O. Box 1452
Minneapolis, MN 55440-1452